

# Culver Historical Highlights

Volume 27 No. 2

Published by the Culver City Historical Society

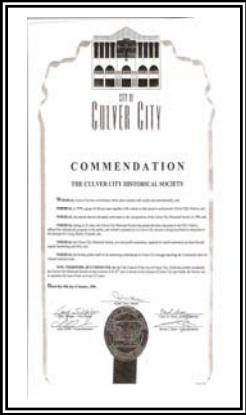
Spring 2006

## CCHS INSTALLS NEW BOARD AT JANUARY MEETING SOCIETY RECEIVES COMMENDATION FROM CC CITY COUNCIL

### CULVER CITY COUNCIL ISSUES COMMENDATION TO HISTORICAL SOCIETY

On January 18<sup>th</sup>, the City of Culver City issued a Commendation to the Culver City Historical Society to congratulate the Society on its 25 years of preserving history.

The beautiful Commendation was presented by three Councilmembers – Mayor Albert Vera, Councilmember Carol Gross and Councilmember Steven Rose – to Incoming President Cathy Zermeno. This was especially meaningful, as all of the Councilmembers are also Society members.



### MAY IS HISTORIC PRESERVATION MONTH

Historic Site Chair Sam Cerra is researching Camp Latham, a Civil War camp located about the site of Rotary Plaza, for submission as CCHS Historic Site #11. *More soon!*

### NEW BOARD TO TAKE REINS FOR NEXT TWO YEARS



**INSTALLATION OF NEW CCHS BOARD:** (L-R) Lynn Baril (Treasurer), Susan Deen (VP, Ways & Means), Cathy Zermeno (President), Robin Turner (VP, Museum), Marty Nicholson (VP, Programs), Mary Gibson (Secretary). *(more Installation coverage on pg. 5)*

*Photo by Glenn Esterly, Culver City News.*

### MEET YOUR CCHS BOARD

The new CCHS Board which was installed at the January 18, 2006 General Meeting has an accumulative total of almost 700 years of living in Culver City! That impressive fact, coupled with the wonderful amount of dedication and support to preserving our city's history, bodes well for the Society's next two years.

With many exciting and challenging projects and missions ahead, let us introduce the new Culver City Historical Society Board:

### CATHY ZERMENO: PRESIDENT

Though the Society's first and founding CCHS president (*installed in 1980*) was born in Santa Monica, CA, Cathy Zermeno and her husband, George, moved to Culver City in 1953, and almost from the beginning, she became active in community affairs.

Both of their children, son Chris and daughter Melissa, were raised in Culver City, attending CC schools from K thru 12, and Cathy was active in the PTA.

Cathy started to work at the CC Chamber of Commerce about 1980 and

*(cont'd on page 6.)*

## ~ APRIL 19<sup>TH</sup> GENERAL MEMBERSHIP MEETING ~

### Special Guest Speaker GLEN HOWELL

The Culver City Historical Society's Spring General Membership Meeting will be held on Wednesday, April 19<sup>th</sup> at 7:00 pm in the Lethridge Garden Room at the Veterans Memorial Building, 4117 Overland Avenue.

Featured speaker, Glen Howell, will tell of the history of Rancho La Ballona and its water struggles. Learn about the horrendous battles fought between property owners in the early days as fresh water became scarce and tempers ran hot! Glen is a City Historian of Mar Vista, a docent at the Adamson House in Malibu and a member of the Culver City Historical Society. There will also be an art display of wonderful paintings of the city by our own Vivian Matheson.

The public is invited to enjoy the free program and students are encouraged to attend. Refreshments will be served following the program. For more information, please call Marty Nicholson at (310) 253-6662.

# PRESIDENT'S MESSAGE

by Cathy Zermeno



The January 18<sup>th</sup> Installation was a perfect evening and one I will never forget! A very special thanks goes to Event Chair Julie Lugo Cerra who not only did her usual outstanding job, but helped continue both the heritage of the Society and of Culver City.

*For the Society:* 25 years ago, Julie's father, Charlie Lugo, was the installing officer for the first CCHS Board of which, I'm proud to say, I was the founding President. It was indeed a pleasure to have Julie and her brother Carlos Lugo do the honors for this year's Installation.

*For Culver City:* The Lugo Family is a very important part of our history. Its ancestors were at the founding of the Pueblo de Los Angeles and inter-married with the Machado Family. Among the descendants were the "Machado Brothers" (Agustin & Ygnacio) that our Living History project spotlighted this year (see pg. 7). Agustin's daughter, Vicenta, married Francisco Lugo, the great-grandfather of Julie & Carlos Lugo. And so, the direct line of history continues.

I have several goals for the next two years, including the preservation of the MGM costumes which the Society is overseeing for the City, working toward establishing our Museum open to the public, and, perhaps most importantly, increasing our membership with new blood and new ideas. In future newsletters, I will discuss these and other issues more fully. Until then, I look forward to seeing you all at the Spring General Meeting on April 19<sup>th</sup>!

Best, *Cathy Zermeno*

## Culver Historical Highlights

PO Box 3428 • Culver City, CA • 90231-3428  
(310) 287- 3850  
[cchistorical@pacbell.net](mailto:cchistorical@pacbell.net)

The Culver City Historical Society, founded in 1980, is a non-profit membership organization created for the purpose of collecting, preserving and exhibiting the history of Culver City and its cultural and civic accomplishments.

The CCHS Newsletter is published quarterly.  
Publisher .....Deborah Kearney  
Editor.....Judy Stangler  
Contributing Writers.....Julie Lugo Cerra  
Sandy Burton  
Marc Wanamaker  
Printed by..... Mr. Printer

### Officers and Committee Chairs

Cathy Zermeno .....President  
Steven J. Rose .....Past President  
Marty Nicholson.....1<sup>st</sup> VP, Program  
Robin Turner .....2<sup>nd</sup> VP, Museum  
Susan Deen .....3<sup>rd</sup> VP, Ways & Means  
Mary Gibson .....Secretary  
Lynn Baril .....Treasurer  
Steven J. Rose .....Parliamentarian  
Reba Yudess.....Membership  
Jozelle Smith .....Public Relations  
Judy Stangler.....Newsletter  
Sam Cerra.....Historic Sites  
Julie Lugo Cerra .....Governmental Liaison  
Anita Shapiro .....Sunshine

## Notes from Your City Historian

by Julie Lugo Cerra



### CITY WEBSITE: "HISTORY UPDATED"

The history section of the city website, [www.culvercity.org](http://www.culvercity.org), has been updated. Kudos go to the award-winning information technology team led by John Richo which has been very supportive – and notably, Valerie Perez.

Please note that one of the new items to be posted on the city website is an historic piece that was too big to put in the newsletter – the map that was used to sell the city voters on the first charter in 1947. The primary issue centered on the loss of school funds for Culver City. The district at that time even included an area north of Venice. *Take a look!*

### HISTORIC PRESERVATION

The Helms Building began the process for a *Certificate of Appropriateness* with the Cultural Affairs Commission on March 14. It then goes to the Planning Commission for approval.

### FROM THE JUNE ANDERSON CALDWELL ARCHIVES

Every time CCHS member June Anderson Caldwell sifts through her personal photo collection, she comes up with great finds. The photo (*at right*) was taken when she lived on Madison Avenue, behind the Pitti house.

Behind Baby June, held by her sister, Edna, you can see the Cereghino house across the street (SE corner of Madison/Farragut) before the wall was built.

Cereghino was the owner of the Washington Improvement Co. which developed Tract 1775 in that area. He named the streets for *politicos*.

As always, thanks, June, for sharing!



*Edna Anderson holding baby sister, June, across from the Cereghino house, c. mid-1920s.*

### Editor's Column

*"WHEREAS, during its 25 years, the Culver City Historical Society has preserved items important to the City's history, offered free educational programs to the public ... [and] prides itself on its continuing commitment to Culver City through educating the Community about its vibrant historical roots... [the City Council] hereby commends the Culver City Historical Society on the occasion of its 25<sup>th</sup> year of service to the citizens of Culver City..."*

This is in part what is stated on the Commendation presented to the Society at the Jan. 18<sup>th</sup> Installation. It accurately reflects the dedication and support each of our members gives and also states the goals and plans of our new Board with founding and newly-installed President Cathy Zermeno leading us as we begin our second quarter century of service.

***Remember, it's YOUR Historical Society—we can't succeed without YOU!***

### DO SOMETHING HISTORIC IN 2006!

Would you like to be part of our walking tours? Become a Docent? Work as a Living History presenter? An Organizer?

Please call Julie Lugo Cerra:

Tel: (310) 558-3818

Email: [julie@CerraEnterprises.com](mailto:julie@CerraEnterprises.com).

# REEL CULVER CITY

by Marc Wanamaker

## REMEMBERING THE HAL ROACH STUDIOS

One of Culver City's lost landmarks was the Hal Roach Studios, originally located at 8822 West Washington Blvd. (at the corner of Washington & National Blvds.). In 1980, the site was marked with an historical plaque as one of the City's most famous and important studios.

### FORMED IN 1914

The Hal Roach Company was formed in 1914 and had leased several studio sites in the Los Angeles area until finally settling in Culver City. The original name for Roach's company was "Rolin" – named after Hal Roach and financial backer Dan Linthicum. After a couple of company closures, Roach's friend, comedian Harold Lloyd, became the fledgling studio's lead star, ensuring the small company's success.

### THE 1920S USHERS IN A NEW ERA

In 1920, Hal Roach formed a new company called "Hal Roach Studios" and a new era began. At this time, Harold Lloyd, Charlie Chase, Snub Pollard and Ruth Roland were among the top stars of the company.



The Hal Roach Studios c 1920.

By April 1920, the studio consisted of the administration building on Washington Blvd., one large open stage and an enclosed stage, a set storage building, a laboratory and department bungalows. There was a back lot with various types of sets that were used over and over again. By May, there was a 'pool' water tank installed and some other departmental buildings.

In January of 1922, actress Ruth Roland was making Roach "serial

chapter plays" while a new concrete stage was being built. In September, the first of the *Our Gang* comedies was produced and by 1923, famed vaudevillian Will Rogers was signed to star in a series of comedies.

Throughout the 1920s, such stars as Laurel and Hardy, Charlie Chase, Will Rogers, Snub Pollard and the *Our Gang* gang dominated the Roach output – along with Harold Lloyd until he left the company in 1924.

In May of 1923, Hal Roach purchased a 10-acre ranch near the studio at what is now Robertson Blvd, where he shot films on 'location.' [see CCHS Fall 2005 issue for a personal account from the Moselle family on the Roach 'ranch.']

Hal Roach employed a variety of 'actors,' including the star of one of his favorite films: *The Devil Horse* (1926) starring Max "The Wonder Horse." And it was in September of 1926 that Laurel and Hardy were officially teamed for the film, *Duck Soup*.

By January of 1927, all Roach productions were distributed by MGM Studios, making the Hal Roach Studio the comedy unit of MGM. With the coming of sound pictures, the Hal Roach Company was in the forefront of sound technology and all Roach films became 'sound' pictures, made in newly constructed 'sound' stages.

### THE GOLDEN ERA OF THE 1930S

The 1930s was the golden era for the Roach studios with a star line-up that included some of the most popular comedians around: Laurel and Hardy, Charlie Chase, *Our Gang*, Thelma Todd and Zasu Pitts.

In 1937, Roach began production of feature films, the first being the classic *Topper*, starring Constance Bennett and Cary Grant. By the end of the 1930s, Roach had produced such films as: *Zenobia* starring Oliver Hardy, *Captain Fury* with June Lang, *Of Mice and Men* starring Burgess Meredith and Lon Chaney Jr., and *The Housekeeper's Daughter* with Joan Bennett.

The Roach Studios continued making feature films into the 1940s until the Army-Air Force took over the entire lot, nicknaming it "Fort Roach." Here, training and propaganda films were made – by many of the Hollywood set, including a popular young actor named Ronald Reagan.

Following the war, the Roach Studios resumed its feature film production activity with the construction of new stages and facilities. Other production companies also located on the lot. Hal Roach, Jr. led the company into television production, overseeing such productions as *Life With the Erwins*, *My*

Little Margie, Racket Squad and Amos and Andy.

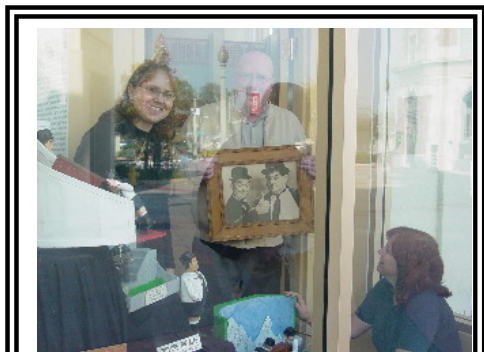


The Hal Roach Studios c 1920.

### AN ERA OF FILM HISTORY ENDS

In April of 1959, the Hal Roach Studios was closed due to bankruptcy. Hal, Sr. came back to try and get the studio rolling again, but by December of 1962, the studio was permanently closed. In August 1963, the studio was finally demolished after several auctions and sales of the company's assets.

Though Hal Roach, Sr. would live to see his 100<sup>th</sup> birthday, the final demise of his "Laugh Factory" was truly the end of a remarkable era of film history. ###



Museum Chair, Robin Turner, checks out her new display at the CCHS display case at the Pacific Theatre complex in downtown Culver City. Christine Byers from the city's Cultural Affairs Division, helped change to a new display of the Gragg woodcarvings. (And, isn't that a "ghostly" Steve Rose behind the Laurel & Hardy photo?!)

## DID YOU GO TO MOVIES AT THE MERALTA THEATRE?

Did you work there? Do you remember the movies you saw? Share your memories ~ they will appear in the next newsletter!

Contact Julie Lugo Cerra

Tel: 310 558-3818 or email:

[Julie@CerraEnterprises.com](mailto:Julie@CerraEnterprises.com)

# CULVER CITY HISTORICAL SOCIETY ~ ~ ~

## REMEMBERING... "STUDIO VILLAGE & LINDBERG PARK"

by Betty Lehman & Martha Tolkien

[Ed. Note: Betty Lehman has lived in the Studio Village area for almost 80 years and Martha Tolkien has lived in her same house since 1945. The following account is based on a letter Betty wrote for Martha on November 13, 2005 to record the development of Studio Village as she knew it. Betty's father, John L. Lehman, was a Culver City Councilman from 1933-1940.]

In approximately 1926 or 1927, my uncle, Col. William H. Evans, began developing this [Studio Village] area. He built five houses and my father, John Lehman, bought the first house at 5123 Westwood Blvd. We moved in in July, 1928.

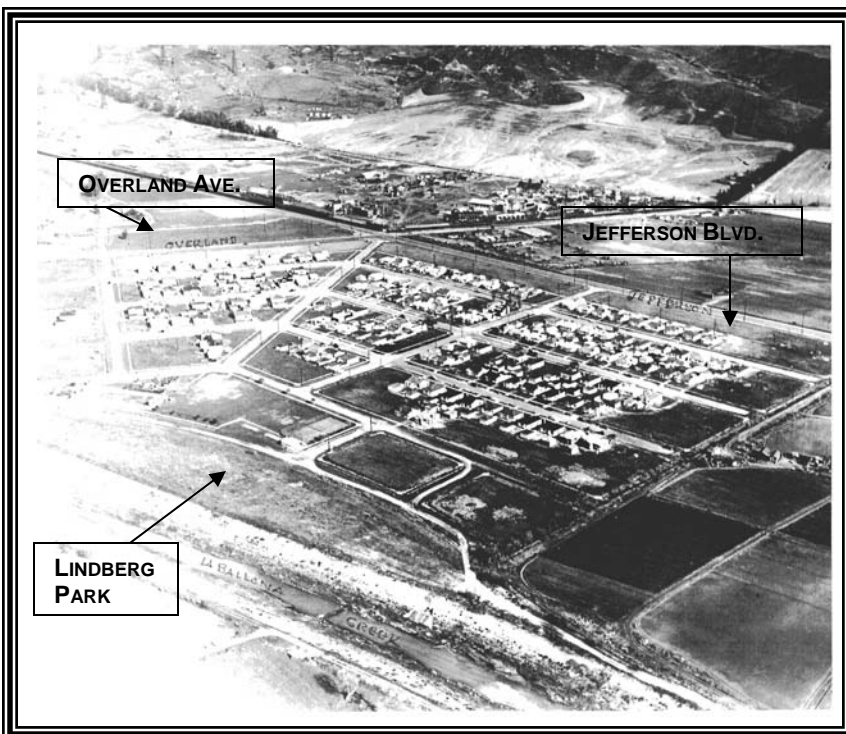
My uncle who was the President of the Chamber of Commerce about this time, loved films and his favorite stars were Douglas Fairbanks and Mary Pickford. So he named two of the streets Fairbanks Way and Pickford Way. He named Virginia Ave. after his daughter and Rhoda Way was named after the wife of a Mr. Crawford who built the sidewalks and curbs. Hazleton Ave. which is now Keniston Ave. was named after an old girlfriend named Hazel. Ocean Drive was already named when he acquired the property.

In order to develop the property, my uncle had to donate a certain amount of land for a park. Because of his long and close friendship with Charles Lindbergh who had made aviation history by flying solo over the Atlantic, my uncle named the park for him. [Martha adds that Betty's father told Betty that someone at City Hall evidently did not realize that Col. Evans had chosen to name the park after his friend, Col. Charles A. Lindbergh and misspelled the name by leaving the "h" off. Unfortunately, it was never corrected.]

*Betty continues:* The park was not maintained by the city as the Depression came along – there was nothing in the park, only weeds & lima beans. A Mr. Brown was part owner of all this property & he grew the lima beans.

My uncle lost the property due to the depression & then the War came along & no building was allowed til after the war – when the majority of houses were built by Mr. Blanco.

Martha ends with Betty's recollection that before there were phones, her folks knew when one of the five homes was expecting company, by the dust billowing down Overland!



**STUDIO VILLAGE, 1941**

*Spacious backyard with open land to the right which is now 10861 Pickford Way.*



*Before the trees were cut down in 1942.*



*Closer to how the house looks today.*



**COL. WM. EVANS BUILT THIS SPANISH-STYLE HOME IN 1929 AT 10865 PICKFORD WAY, CULVER CITY.**

~ ~ ~ CELEBRATING 25 YEARS !”

} **INSTALLATION: JANUARY 18, 2006** {



**CLOCKWISE FROM TOP:**

- 1) **CC Councilmembers present Commendation to Historical Society. L-R: Incoming CCHS President Cathy Zermeno, Councilmember Carol Gross, Mayor Albert Vera & Councilmember/Outgoing CCHS President Steve Rose.**
- 2) **Steve Rose (standing) chats with members. L-R: Glen Howell, Jim Gibson, Mary Gibson, Jeanette & Lou Block.**
- 3) **Steve Rose presents a check for the Academy of Visual & Performing Arts to a student musician. Monies raised to fund the AVPA student trip to the Fringe Festival in Scotland this summer.**
- 4) **New Treasurer Lynn Baril (standing) with new Historic Site Chair Sam Cerra (center)**
- 5) **Members enjoying the delicious El Pollo Loco buffet.**

*(Photos courtesy of Julie Lugo Cerra.)*



---

## **"CCHS Board"** (cont'd.)

also worked for Dan Cavanaugh Realty for more than 20 years. Soon her community involvement included service in such organizations as the Guidance Clinic Guild (*President*), Foster Children's Assoc., CC Homeowners and the CC Woman's Club, as well as on numerous committees and advisory boards, such as the CC Bicentennial Committee, YMCA, the Fiesta La Ballona Committees (*also Chair*), and the Redevelopment Agency Committee. She was appointed to the Civil Service Commission, where she served as Chair and Vice-Chair and continues as an active member of the Sister City Committee, as well as having been honored with numerous City commendations.

Cathy and George still live in the same house and will celebrate 62 years of marriage this coming June!

### **MARTY NICHOLSON: VP, PROGRAMS**

Marty Nicholson was born in Detroit, Michigan and later received a Bachelor's of Science in Education/Recreation from Central Michigan University and a Master's in Public Administration from San Diego State University.

She arrived in Culver City in 2000 and is currently the Recreation Manager for the City of Culver City. In charge of aquatics, enrichment classes, sports, day camps, after-school programs, special events and park permits, Marty has worked in the field of parks and recreation for the past thirty years. She has three children; one boy and two girls. Her hobbies include jogging, hiking and home improvement.

### **ROBIN TURNER: VP, MUSEUM**

Also born in Santa Monica, CCHS VP Museum Chair Robin Turner, however, grew up in the San Fernando Valley. At 29, she met and married a man who lived in Culver City, and permanently settled here ever since.

Having been an accountant for 18 years, Robin decided to realize the dream she held since she was seven: to become an archaeologist. At 34, Robin went back to school, earning her BA and MA at CSUN, while working full-time. She had the incredible privilege of working on the MTA Subway Redline for nine years, hired first to do the paleontology monitoring for the Redline while finishing her MA, and later, to monitor the Redline's archaeological side as well. From this opportunity, she was responsible for finding almost all of the fossils and artifacts that were collected along the Subway route!

Robin now has her own archaeology and paleontology company with 27 employees working all over So. California. Her jobs have included the LACMA Renovation Project, The Grove at Farmers

Market, the Alameda Corridor, a large Native American Village site in Palmdale and the new Symantec project in Culver City as well as the new CC Dog Park.

From the start, Robin became involved in the community and politics. She was a Planning Commissioner for several years, has served on the boards of the Homeowners Assoc., Democratic Club, CERT (Community Emergency Response Team), and works with the CC High School Scholarship program.

Robin has been a member of the CCHS since 1988 and is especially proud to serve as Museum Chair for a second term. Her goal is to have our members working in the new "Museum" facilities at the Bank of the West as soon as renovations are completed.

### **SUSAN DEEN: VP, WAYS & MEANS**

Susan Deen has long been a member of the CCHS, most recently serving as Treasurer.

Raised in Culver City and a graduate of CC High School, Susan received her Accounting and Finance degrees at USC. She is President of Deen & Co., CPAs.

Having lived in Culver City nearly all her life (with just a "short hiatus" after college!), Susan has been extremely active in CC community affairs. She has been a Committee Member and past Chair of Fiesta La Ballona (receiving a City Council Commendation), a supporter of the new CC Dog Park as well as a member of the Friends of the Library.

Susan is a very involved community activist on several fronts along with her husband, Charles who is also a CPA. Currently, she is President of the CC Homeowners Association and Vice Chair of the Cultural Affairs Commission.

### **MARY GIBSON: SECRETARY**

New CCHS Secretary Mary Gibson was born in Ann Arbor, MI, the second child of Jim and Dorothy Gibson. After dad Jim completed his MBA at the University of Michigan, the family headed to California, eventually settling in Culver City in 1952 when Mary was just four years old. The family home has been on Culver Crest since 1954.

Mary attended El Rincon Elementary School, Culver City Junior (*now Middle*) High School and graduated from Culver City High School in 1966 [*Ed. note: in the same class with Cathy Stangler-Crum, sister of newsletter editor, Judy Stangler, AND Chris Zermeno!*]. After obtaining an A.A. degree from West Los Angeles College (1975) and B.A. from UCLA (1979), Mary moved to Lake Tahoe where she lived and raised her two sons, Dean and Anthony, until 2003.

After the death of her mother in 2004, Mary returned to live full time in Culver City, although she frequently returns to Lake Tahoe to visit her sons and two grandchildren, Joshua and Allison.

Mary is proud to be a Realtor and is a member of the Beverly Hills/Greater Los Angeles Board of Realtors. Before returning to Culver City, she owned Tahoe Timberline Properties and is currently a Broker Associate with Boardwalk Realty's Culver City/Playa Vista office. Mary also serves on the West Los Angeles College Foundation Board of Directors.

She is delighted to have the opportunity of working closely with the Society and getting "back in touch" with her roots!

### **LYNN BARIL: TREASURER**

CCHS Treasurer Lynn Baril has an interesting history, starting in Pontiac, Michigan where her family still resides and where her brother is a Judge.

Lynn earned a B.S. in Medical Technology at Michigan State University, an M.S. in Microbiology at Wayne State University and an M.S. in Student Personnel Administration at the University of Tennessee, Knoxville. After leaving Knoxville, she became a residence hall adviser at Vincennes University, Vincennes, IN, capital of the Northwest Territory. In addition, she taught chemistry and microbiology to nursing students, having taught the same subjects to Mortuary Science students at Wayne State.

Lynn arrived in California in the mid-1970s to help set up a research laboratory at USC School of Medicine for the doctor she had worked with in Detroit. She has been very active in Culver City community affairs serving as a Planning Commissioner (1994-2001), also on the CC Economic Development Advisory Committee, Community Emergency Response Team (CERT), and other city committees. She has been active with the CC Homeowners Association, the Friends of the Library and has previously served on the Society's Board as Secretary before being elected Treasurer for 2006-2008.

Lynn, a paralegal for more than 20 years, knows a lot about public transportation, is an avid reader and wine connoisseur!

### **COMMITTEE APPOINTMENTS**

*The Board also includes the following Committee Chairs:*

Parliamentarian:	Steven J. Rose
Membership:	Reba Yudess
Public Relations:	Jozelle Smith
Newsletter:	Judy Stangler
Historic Sites:	Sam Cerra
Government Liaison:	Julie Lugo Cerra
Sunshine:	Anita Shapiro

*Special interests will be overseen by:*

MGM Costumes:	Louise Coffey-Webb
Art Displays:	Vivian Matheson
Cartoon Cels:	Martha & Sol Sigall
Living History:	Julie Lugo Cerra
Pub. Rels. Asst.:	Sandy Burton

## LIVING HISTORY

by Julie Lugo Cerra

### THE FOURTH YEAR: "THE MACHADO BROTHERS"

This is the fourth year the Society has sponsored the Living History Project in local elementary schools. And there were so many volunteers, we had "understudies."

The Culver High students, all members of the Academy Visual and Performing Arts (AVPA), captured the interest of elementary school students throughout the district and received community service credit for their efforts.

The "Machado Brothers" visited fourth graders at all five elementary schools. *Agustín* (Alexandria Richardson) and *Ygnacio* (Andrea Santos) reminisced about family life "in the olden days."

*Agustín* liked to "gallop" around the room to simulate the dawn-to-dusk ride in which he claimed the 14,000 acre Rancho La Ballona. These energetic and versatile young actors, including understudy Halimah Najieb-Locke, moved continually to keep the attention of their young audiences. They talked about their chores, schooling and told stories.

Although the young actors are scripted, they have also learned to emphasize by site. For example:

- At El Rincon: The washing away of the Machado adobe is more meaningful, because of its proximity. We talked a lot about making adobe bricks and what happened when there was a flood!

- La Ballona: CCHS Historic Site #10, was the first school in what became Culver City and the children eagerly shared their school's history with pride.



The "Machado Brothers." L-R: Ygnacio (Andrea), Agustín (Alexandria) and "stand-in" Halima at Lin Howe School presentation.

- Discussion of the rancho boundaries is of particular interest to the students at Lin Howe, which is on La Ballona, but

very near the border (Ince Blvd.) of Rancho Rincon de los Bueyes.

- El Marino: Students kept the actors on their toes, especially with respect to pronunciation, since it is the district's language magnet. They also have Machado descendents in their student body.



"The Machado Brothers" answering questions at El Marino School.

The hands raised during the Q&As at the end of each performance were especially encouraging. One could see "the light bulb go on" as the students made connections with a timeline, from the Native Americans (Gabrielinos) to the Early Settlers, and later the founding of our city.

At the conclusion of the Machado presentation to the Culver City Woman's Club on March 13<sup>th</sup>, the CCWC presented a check to the Academy of Visual and Performing Arts.



CCWC President Lorraine Henderson presents a check for the AVPA to the students.

\* \* \* \* \*

In the next issue, there will be an update on the "Gabrielino" and "Pat Culver Battle" presentations.

Special thanks go to the young actors, teacher and coordinator Drew Seymour at Culver High, and CCUSD Assistant Supt. Diane Fiello and her staff who made the schedules work in a timely manner. ###

## THANK YOU!

A special "Thank You" goes out to the following people:

### New Members:

- Betty Abbott-Griffin (*Individual*)
- John Richo (CC Information Technology Dir.) (*Individual*)
- Dr. Charles & Barbara Hand (*Family*)
- Dave Blair Plumbing (*Business*)
- Ursula & Albert Vera (*became Patrons*)

### Donations:

- Betty Abbott-Griffin
- Fremont Investment & Loan – Ronald Davis, Mgr. (*annual gift*)

And a special "thanks" to Steve Rose for his four years as CCHS President!

## MARK YOUR CALENDAR

APRIL 8: REDEDICATION OF CULVER WEST RICHARD ALEXANDER PARK

APRIL 19: CCHS SPRING GENERAL MEETING

APRIL 22: RIBBON CUTTING FOR CULVER CITY DOG PARK

APRIL 22: MID-CITY EARTH DAY AT LA BALLONA CREEK (310.839.6896)

MAY 16: VENICE HIS. SOC. MEETING (VENICE LIBRARY)

JULY 19: CCHS ANNUAL PICNIC

AUG. 25-27: FIESTA LA BALLONA

OCT. 18: CCHS FALL GEN. MEETING

## GIVE THE GIFT OF HISTORY!

Consider giving a Culver City Historical Society membership as a gift ~ birthdays, holidays, anniversaries, any occasion!



## Become a Member of the Culver City Historical Society Today!

Join others in preserving the history of the "Heart of Screenland" and the efforts to create the Culver City Heritage Museum. We can't do it without you!

### TYPES OF MEMBERSHIP

- |                                      |  |
|--------------------------------------|--|
| _____ Benefactor (\$1000)            | _____ Business Member (\$50)             |
| _____ Corporate Sponsor (\$500)      | _____ Organization (\$15)                |
| _____ Patron Member (\$100)          | _____ Individual Lifetime Member (\$250) |
| _____ Family Lifetime Member (\$500) | _____ Individual Member (\$15)           |
| _____ Family Member (\$25)           | _____ Youth Member (\$5)                 |

**Name/Company:** \_\_\_\_\_ **Telephone:** \_\_\_\_\_

**Contact Person:** \_\_\_\_\_ **Fax:** \_\_\_\_\_

**Mailing Address:** \_\_\_\_\_ **Email:** \_\_\_\_\_

Please make checks payable to **The Culver City Historical Society** and mail to  
P.O. Box 3428, Culver City, CA 90231-3428. For further information, call (310) 287-3850 or email: cchistorical@pacbell.com.  
*Contributions of both historic and social significance as well as monetary donations are encouraged, and the  
CCHS IRS tax exempt status may make such contributions tax deductible.*

### BUSINESS MEMBER ROSTER

These fine Culver City area businesses support our work to preserve Culver City history for future generations.  
Please show YOUR support by your patronage of their services and products.

Agnes Huff Communications..... Agnes Huff (310) 641-2525	Dave Blair Plumbing..... Dave Blair (310) 837-9813
Albertson Oldsmobile ..... Bruce Albertson (310) 398-5721	Flanigan Farms ..... Patsy Flanigan (310) 836-8437
Alliance Bank .....Curtis Reis (310) 410-9281	Freeman Properties ..... Stuart Freeman (310) 839-7593
Brundo Interiors .....Richard Brundo (310) 391-1888	Ken Harada, DDS ..... Ken Harada (310) 837-5121
Byco .....John Byers (949) 645-2251	JW Party Pictures/Photo Lab .....Jeffrey Wilson (310) 216-2820
Cantalini's Salemo Restaurant ..... Lisa Schwab (310) 821-0018	Walter N. Marks Realty..... (310) 204-1865
Cavanaugh Realtors ..... (310) 837-7161	Newton Plumbing ..... Jack & Winnelle Newton (310) 839-1132
Culver Center Flowers ..... (310) 839-2344	Playa Vista ..... Sibyl Buchanan (310) 448-4626
Culver City Employees Federal Credit Union.....;...City Hall	Spartan Supply Co. .... Rick Betts (310) 837-5351

# Culver City Historical Society

PO Box 3428 • Culver City, CA • 90231-3428

**Non-Profit  
U.S. Postage  
PAID  
Permit No. 146  
Culver City, CA**